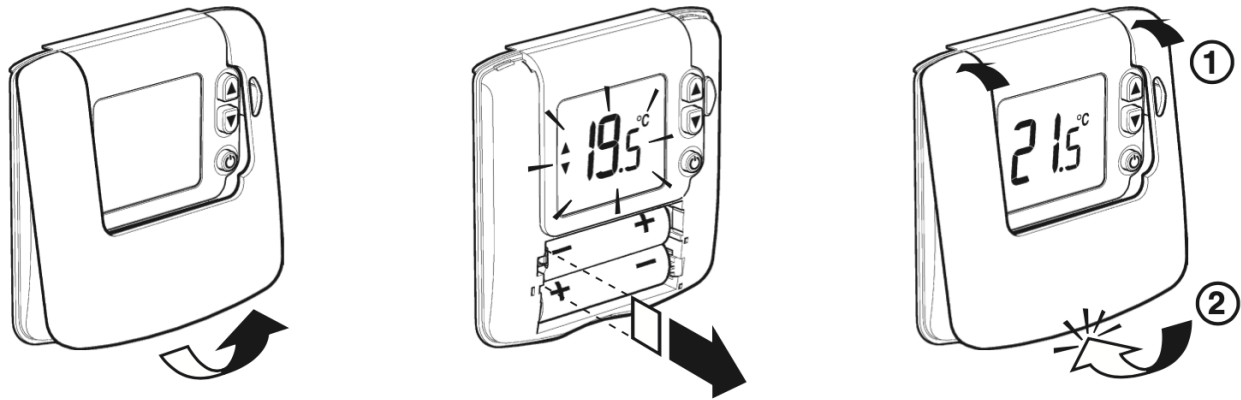


# Lightwave Product Manual for:

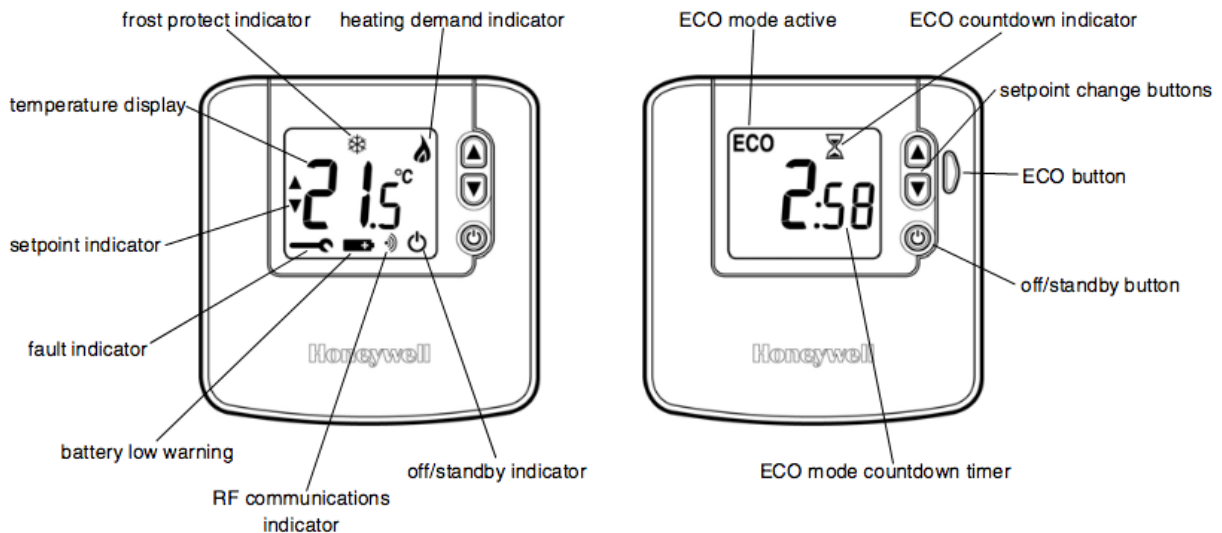
## Honeywell Home Wireless Room Thermostat DTS92E

### Installing the DTS92E

The device takes 2x AA batteries. Before mounting DTS92 onto the backplate:

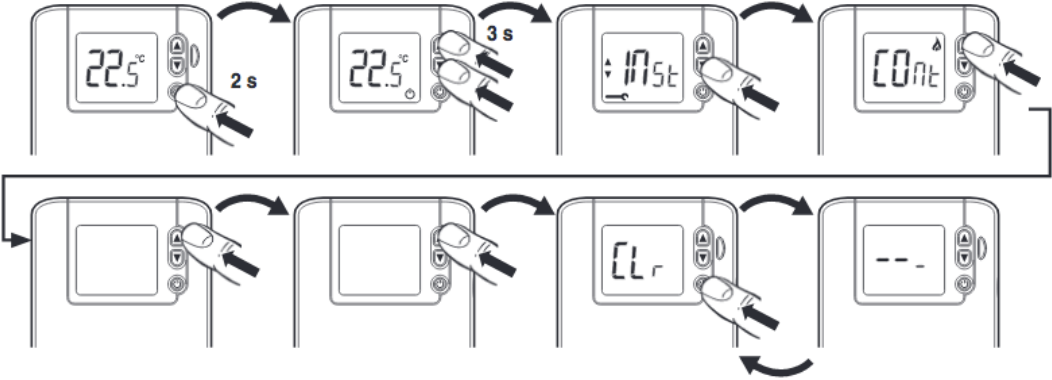


### Control Layout



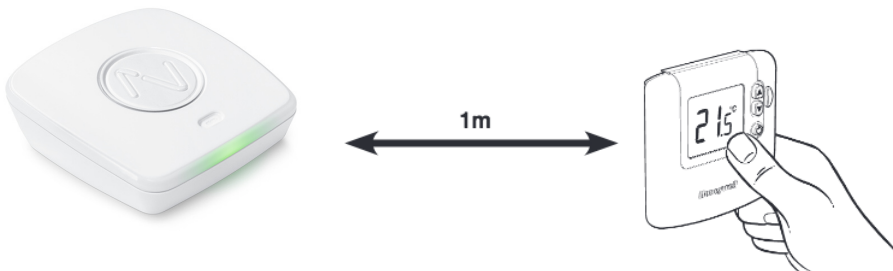
### How to Clear the memory :

- 1. On the Thermostat, press and hold the POWER button for 2 seconds to put the unit into standby mode.
- 2. Press the UP and DOWN arrow buttons together till you see "Inst" on the screen.
- 3. Now press the DOWN arrow once to go to "C0nt".
- 4. Press the UP arrow 3 times to get to "Clr" and then press the OFF (power) button.
- 5. The memory of the Thermostat is now cleared.



## How to pair the Thermostat to the Link Plus :

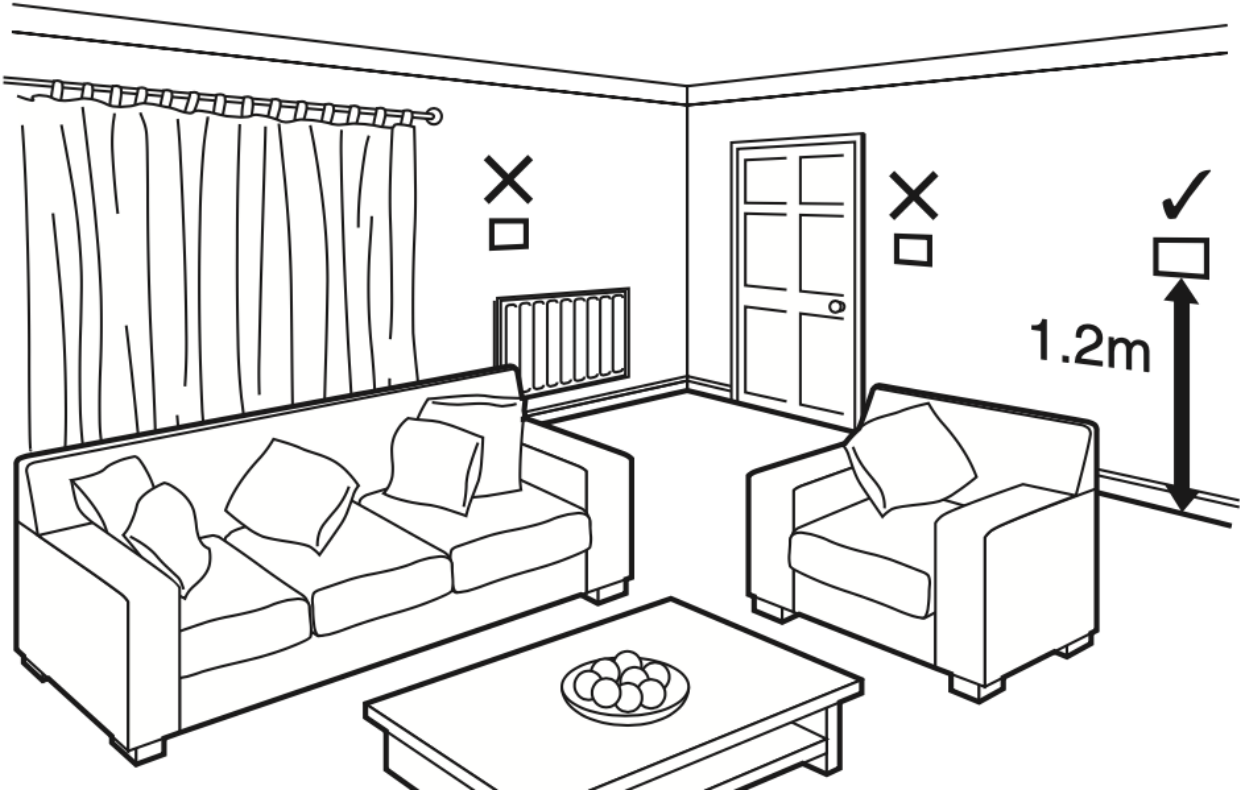
Make sure the unit is around 1 meter away from the Link Plus during the pairing process:



1. Open the Link Plus app, press the plus symbol (+) in the bottom menu and select **“Devices”**.
2. Select **“LINK HONEYWELL HOME DEVICE”**.
3. Give the device a name on the app, DO NOT press **“LINK”** yet, follow the next steps to put the Thermostat into binding mode first.
4. On the Thermostat, press and hold the power button for 2 seconds to put the unit into standby mode.
5. Press the UP and DOWN arrow buttons together till you see **“Inst”** on the screen (Installer mode).
6. Now press the down arrow once to go to **“C0nt”**.
7. Now press the OFF (power) button on the Thermostat.
8. On the Link Plus app, press the **“LINK”** Button, the device will now be paired to the Link Plus and appear in the app with the device name you entered in step 3.

### Locating the Room Thermostat

For best performance, install in an open space where the DTS92E can sense the room temperature (away from radiators, fans, windows and doors), and where the signal strength is high. The Thermostat can be mounted on a wall or on the optional table stand. Leave at least 30cm distance from any metal objects and at least 1 metre from any other electrical equipment.



# Mounting the Room Thermostat

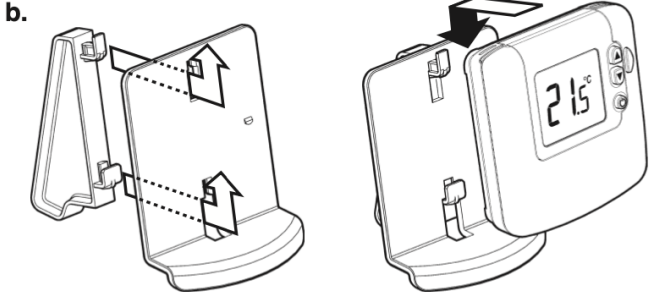
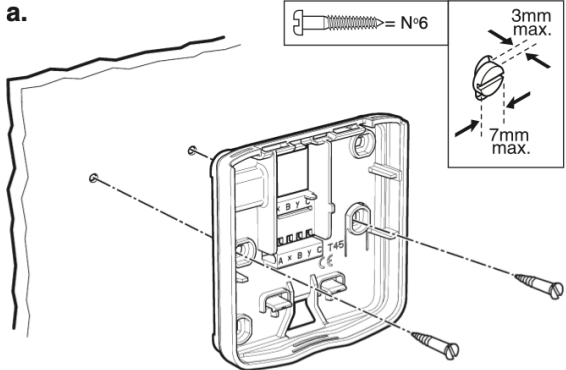
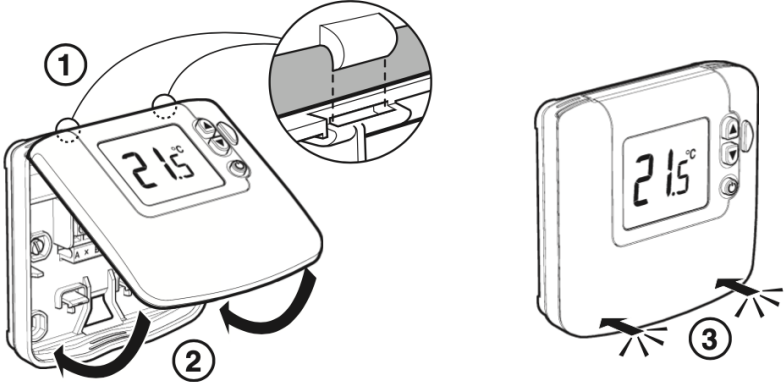
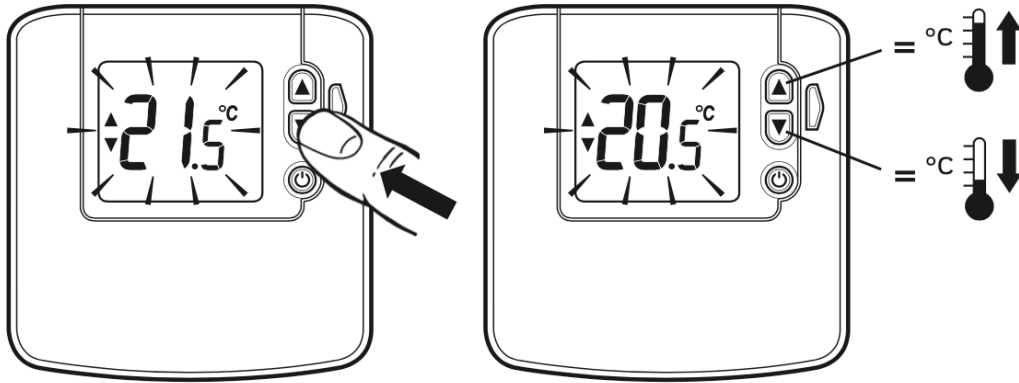


Table stand (optional) / Soporte de sobremesa (opcional) / Support mobile (optionnel) / Tafelstandaard (optioneel) / Tischständer (optional) / Supporto da tavolo (opzionale) / Asztali állvány (opcionális) / Stólní stojánek (volitelné příslušenství) / Podstawka termostatu (opcja) / Stojan (na objednávku)

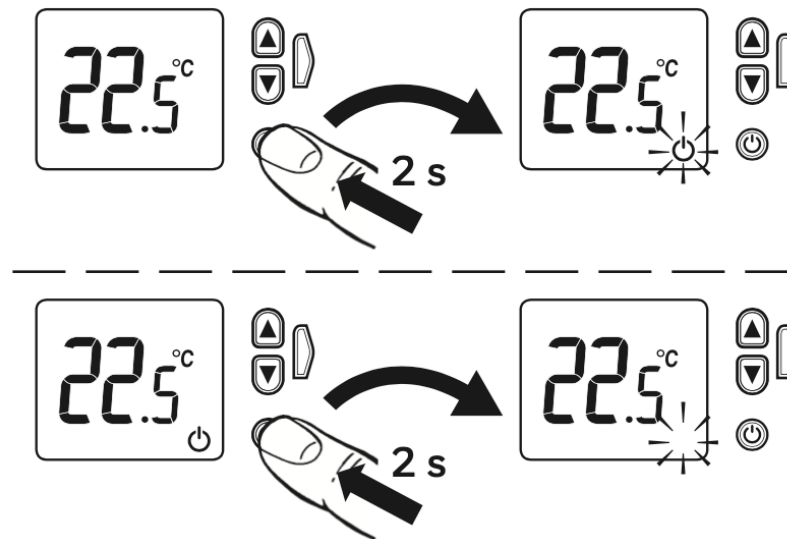


## Basic Operation

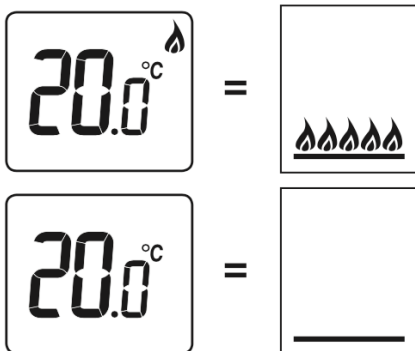
How to set and adjust temperature



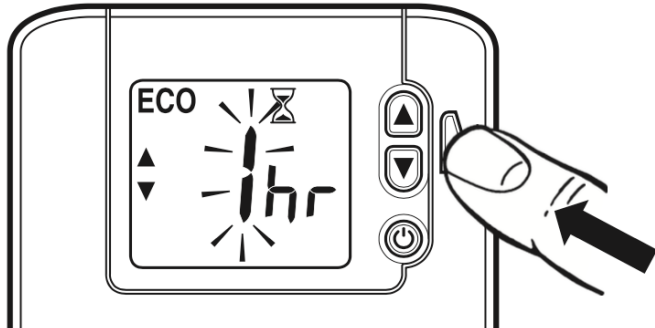
Switch ON/OFF (frost protection enabled)



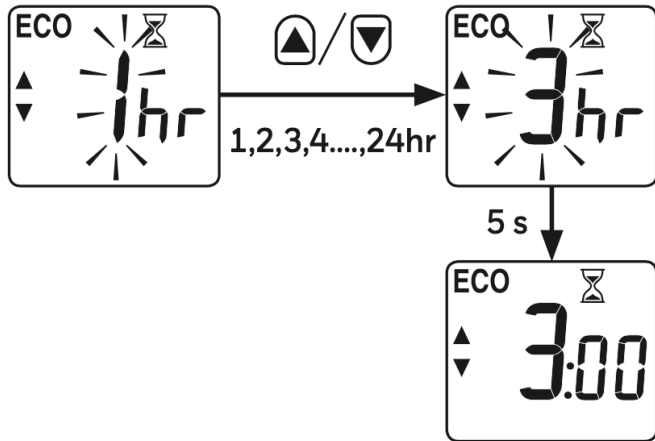
Heating Demand Indicator



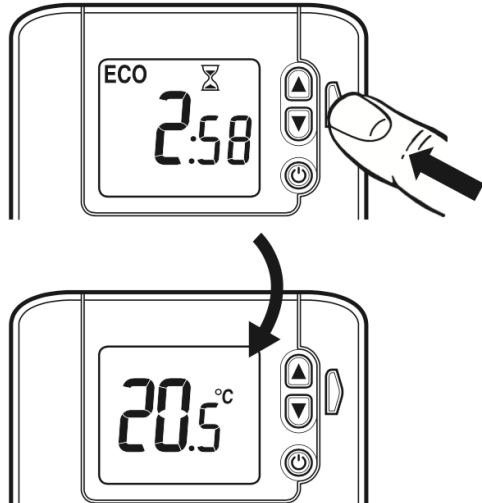
Pressing the green ECO button gives a timed period at a different, predefined temperature



To set the ECO energy savings time period



To exit ECO mode, press ECO button again



## Specifications

Room thermostat Power supply : 2 x 1.5V IEC LR6 (AA) Alkaline cells Battery life : Minimum 2 years (with correctly specified alkaline cells).

Battery low warning: Display indicates when battery power reserve is low. Unit will continue to function for a minimum of 4 weeks after the first indication is given.

Battery replacement: Configuration settings stored in NVRAM, so are retained during battery replacement.

Dimensions : 90 x 92 x 30.5 mm

Weights : 154g (thermostat with batteries)